

EECS
DOMAIN PROTOCOL
FOR
AS CONEXUS BALTIC GRID - LATVIA

DRAFT

Document Reference

AIB-[YEAR]-DP[XX]-
[Member] [Domain]

Prepared by

EECS Scheme Member

Release

1/2023

Date

Klik of tik om een datum
in te voeren.

Based on EECS Rules

Release 8 v1.2

DOCUMENT CONTROL

Version	Date	Originator	Reviewers
1	10 April 2023	Ance Ansone	Katrien Verwimp, ...

Version	Date	Approver	Responsibility

CHANGE HISTORY

Version	Description
1	Initial domain protocol for Latvia (gas)

TABLE OF CONTENTS

A	Introduction.....	- 5 -
B	General.....	- 6 -
B.1	Scope.....	- 6 -
B.2	Status and Interpretation.....	- 6 -
B.3	Roles and Responsibilities.....	- 7 -
B.4	Summary: Issuance scope.....	- 8 -
C	Overview of National Legal and Regulatory Framework.....	- 9 -
C.1	Energy Market context for gases in Latvia.....	- 9 -
C.2	The EECS Framework.....	- 10 -
C.3	National Energy Source Disclosure.....	- 11 -
C.4	National Public Support Schemes.....	- 12 -
C.5	EECS Product Rules.....	- 13 -
C.6	Non-EECS certificates in the Domain.....	- 13 -
C.7	Local Deviations from the EECS Rules.....	- 13 -
D	Registration.....	- 14 -
D.1	Registration of an Account Holder.....	- 14 -
D.2	Resignation of an Account Holder.....	- 15 -
D.3	Maintenance of standing data.....	- 16 -
D.4	Account Holder data Error handling.....	- 16 -
D.5	Registration of a Production Device.....	- 16 -
D.6	De-Registration of a Production Device.....	- 20 -
D.7	Maintenance of Production Device Registration Data.....	- 21 -
D.8	Audit of Registered Production Devices.....	- 22 -
D.9	Registration Error/Exception Handling.....	- 23 -
E	Certificate Systems Administration.....	- 25 -
E.1	Issuing EECS Certificates.....	- 25 -
E.2	Processes.....	- 26 -
E.3	Measurement.....	- 28 -
E.4	Energy Storage.....	- 29 -
E.5	Energy Carrier Conversion.....	- 29 -
E.6	Combustion Fuel (e.g., Biomass) Input and Production Devices with multiple energy inputs -	30 -
E.7	Format.....	- 31 -

E.8	Transferring EECS Certificates	- 32 -
E.9	Administration of Malfunctions, Corrections and Errors	- 33 -
E.10	End of Life of EECS Certificates – Cancellation	- 34 -
E.11	End of Life of EECS Certificates – Expiry	- 35 -
E.12	End of Life of EECS Certificates – Withdrawal	- 35 -
F	Issuer’s Agents	- 37 -
F.1	Production Auditor	- 37 -
F.2	Production Registrar	- 37 -
F.3	Measurement Body(/ies)	- 37 -
G	Activity Reporting	- 38 -
G.1	Public Reports	- 38 -
G.2	Record Retention	- 38 -
G.3	Orderly Market Reporting	- 38 -
H	Association of Issuing Bodies	- 39 -
H.1	Membership	- 39 -
H.2	Complaints to the AIB	- 39 -
I	Change Control	- 41 -
I.1	Complaints to Conexus	- 41 -
I.2	Disputes	- 41 -
I.3	Change Requests	- 41 -
Annex 1	Contacts List	- 43 -
Annex 2	Account Application/Amendment Form	- 45 -
Annex 3	Device Registration Form	- 46 -
Annex 4	Production/Consumption Declaration	- 48 -
Annex 5	EECS Cancellation Statement	- 49 -

A INTRODUCTION

This Domain Protocol describes how the EECS Standard has been implemented in the Latvian Domain for a certain type of energy certificate and it indicates where that system deviates from that standard. The EECS framework including the Domain Protocol aims to ensure robustness and transparency for all parties involved.

A Domain Protocol promotes quality and clarity, as it:

- explains local rules;
- provides clear information to all stakeholders (consumers, market parties, other members, government, the EU Commission etc.);
- facilitates assessment of compliance and permissible deviation from the EECS Rules;
- facilitates audit; and
- translates local rules into a single format and language, supporting each of the above.

Important contact information is provided in Annex 1.

B GENERAL

B.1 Scope

This section demonstrates compliance with the following EECS Rules:

A11.1.1	C3.1.1	E6.2.1a	E6.3.1	E6.3.2	O2.1.1	
---------	--------	---------	--------	--------	--------	--

- B.1.1 This Domain Protocol sets out the procedures, rights, and obligations, which apply to the Domain of Latvia and relate to the EECS Gas Scheme as defined in the EECS Rules.
- B.1.2 Production Device qualification for this Domain will be determined such that, the Production Device is effectively located in Latvia. A Production Device can be a single device with single production technology, that produce an Output with or without a common connection point to the interconnected gas system and a common gas measurement system.
- The borders of the Domain are determined as follows: the System operator’s networks in the territory of Latvia bordered with other domains by cross-border gas transmission pipelines;
 - There are no Production Devices currently that are connected to Latvia and another domain system operator.
- B.1.3 AS “Conexus Baltic Grid” (hereinafter - Conexus) is authorised to Issue EECS Certificates relating to the following EECS Product(s):
- TEECS GOs, for biogas, biomethane or synthesis gas from renewable energy sources for grid injected gas.
 - The guarantees of origin (hereinafter – GOs) GOs with the dissemination level of the Output, for off-grid produced and off-grid consumed biogas, biomethane or synthesis gas from renewable energy sources, for national use only in Latvia.
- B.1.4 Conexus is authorised to Issue EECS Certificates relating to the following EECS Product Type(s):
- Source: Gas (renewable)
- B.1.5 Conexus is authorised to Issue EECS Certificates relating to the following Energy Carriers: gas and the following energy sources: renewable including biomass. Certificates are issued for the following Types of Gas: Hydrocarbon gas (methane).
- B.1.6 Conexus is authorised to Issue the following types of energy certificates outside of the EECS Framework: GOs for off-grid produced and off-grid consumed biogas, biomethane or synthesis gas from renewable energy sources, for only national use in Latvia.

The following parts of this Domain Protocol also apply for these for these non-EECS certificates.

B.2 Status and Interpretation

This section demonstrates compliance with the following EECS Rules:

E6.2.1d	E6.2.4	E6.3.1	E6.3.4
---------	--------	--------	--------

- B.2.1 This document refers to EECS Rules Release 8 v1.3. It is based on the Domain Protocol template release January 2023.

- B.2.2 The EECS Rules are subsidiary and supplementary to national legislation. Chapter XV of Energy Law¹ sets main principles for EECS GOs, as well as GOs for off-grid produced and off-grid consumed biogas, biomethane or synthesis gas from renewable energy sources outside of the EECS Framework: <https://likumi.lv/ta/id/49833-energetikas-likums>.
- B.2.3 The EECS Rules and its subsidiary documents are implemented in Latvia in the manner described in this Domain Protocol. Any deviations from the provisions of the EECS Rules that may have material effect are set out in section C.7 of this document.
- B.2.4 The capitalised terms used in this Domain Protocol shall have the meanings ascribed to them in the [EECS Rules](#) except as stated in section C.7 of this document.
- B.2.5 This Domain Protocol is made contractually binding between any EECS Participant and Conexus by agreement in the form of the Standard Terms and Conditions.
- B.2.6 In the event of a dispute, the approved English version of this Domain Protocol will take precedence over a Latvian language version.

B.3 Roles and Responsibilities

This section demonstrates compliance with the following EECS Rules:

A11.1.1	C3.1.1	E4.2.2	E6.2.1c	H
---------	--------	--------	---------	---

- B.3.1 The Authorised Issuing Body for gas EECS GOs in Latvia is Conexus. Its role is to administer the EECS Registration Database (hereinafter – Registry) and its interface with the EECS Transfer System. Information regarding service fees and invoicing is available on Conexus website under subsection fees: www.conexus.lv (*website will be added*).
- B.3.2 The Competent Authority for EECS GOs and GOs for gas in Latvia is Conexus. Its role is defined by legislation to be responsible for the operation of for EECS GOs and GOs for gas in Latvia. Energy Law, especially Chapter XV¹ sets main principles for EECS GOs: <https://likumi.lv/ta/id/49833-energetikas-likums>.
- B.3.3 The Authorised Measurement Body for the Network-compatible Gas injected into gas distribution network and gas transmission network is Conexus as the unified gas transmission and storage system operator. It is the body established under national regulation to be responsible for the collection and determination of measured Output from a Production Device quantities and their quality control, when Network-compatible Gas is injected in gas distribution network and gas transmission network (interconnected gas system). Conexus shall ensure the accounting and quality control of the transmitted gas at the entry points and the gas metering stations, recording the quantity, pressure and temperature of the transmitted gas on regular basis with frequency requested by applicable legislation. The Cabinet of Ministers of the Republic of Latvia determines the procedure for monitoring and accounting for the circulation of biomethane that is not injected into the interconnected gas system.
- B.3.4 Contact details for the principal roles and Issuing Body agents are given in Annex 1.
- B.3.5 The EECS Registration Database operated by Conexus can be accessed via the website <https://grexel.com/q-rex/> (*correct link will be added*).

National GO (non-EECS*)	GOs for off-grid produced and off-grid consumed gas			
EECS Support Certificate	none			
EECS Target Certificate	none			
EECS NGC (name)	none			
National certificate other than GO (non-EECS*)	none			

(*) Non-EECS certificates may not be transferred over the AIB hub.

C OVERVIEW OF NATIONAL LEGAL AND REGULATORY FRAMEWORK

C.1 Energy Market context for gases in Latvia

C.1.1 The liberalisation of Latvian gas market began on 3rd April 2017 when Conexus as the unified natural gas transmission and storage system operator, upon the full completion of ownership unbundling, started to provide the third-party-access services in relation to natural gas transmission system in the territory of Latvia and natural gas storage in Inčukalns underground gas storage facility. In addition to its unified gas transmission and storage system operators' tasks, Conexus is appointed to be the Competent Authority and national GO issuing body for renewable gas (biogas, biomethane and synthesis gas) and will perform GO issuance from 1 July 2023. More information in national Energy Law (most recent consolidated edition available only in Latvian) Chapter XV¹, Article 117.¹-117.⁷: <https://likumi.lv/ta/id/49833-energetikas-likums>

C.1.2 In Latvia, most biogas is produced at biogas plants on farms, landfills and wastewater treatment facilities. The biogas production in 2019 was approximately 153 million m³ of biogas. As of the first months of 2023, there are no biomethane producers, that are connected to the interconnected gas system, yet. There is a potential of off-grid producers, that would want to inject biomethane into the interconnected gas system, by transporting biogas to the centralized biomethane injection points of the gas transmission network, where it would be purified into biomethane prior to injection. As of the first months of 2023 the regional biomethane injection point is not currently operational. More information on Conexus website: <https://www.conexus.lv/biomethane-injection-points> and here:

<https://www.conexus.lv/aktualitates-sistemas-lietotajiem/par-biometana-ievades-punktu-publiskas-apspriesanas-rezultatiem>

- C.1.3 Transparency information about gas transmission, storage, flows, balancing and tariffs, relevant regulation and green initiatives for renewable gas development is available on Conexus website: <https://www.conexus.lv>
- C.1.4 Overview of the gas market (and overall Latvian energy market) can be viewed on the webpage of national regulatory authority of Latvia - the Public Utilities Commission (Regulator): <https://www.sprk.gov.lv/en/content/natural-gas>

C.2 The EECS Framework

This section demonstrates compliance with the following EECS Rules:

D3.1.2	E6.2.1b	E6.2.1d	N8	O.10
--------	---------	---------	----	------

- C.2.1 For this Domain, the relevant local enabling legislation is as follows: Energy Law transposing, among others, Directive 2009/73/EC of the European Parliament and of the Council of 13 July 2009 concerning common rules for the internal market in natural gas and repealing Directive 2003/55/EC; Directive (EU) 2019/692 of the European Parliament and of the Council of 17 April 2019 amending Directive 2009/73/EC concerning common rules for the internal market in natural gas; Directive (EU) 2018/2001 of the European Parliament and of the Council of 11 December 2018 on the promotion of the use of energy from renewable sources (recast). Energy Law (current consolidated version available only in Latvian) is available here: <https://likumi.lv/ta/id/49833-energetikas-likums>
- C.2.2 Conexus has been appointed as an Authorised Issuing Body for EECS GOs under Energy Law, Paragraph 1 of Section 117.³ https://likumi.lv/ta/id/49833/redakcijas-datums/2023/07/01#p117_3. Chapter XV¹ of the Energy Law is dedicated to gas guarantees of origin and it enters into force on 1 July 2023.
- C.2.3 Energy Law specifies framework concerning the EECS GO system in Latvia. Article 117.¹ among other states that in order to prove to energy consumers or end-users that a part of the energy or the amount of energy is obtained from renewable energy resources, the origin of the relevant renewable energy is confirmed with gas GO. A producer who produces biogas, biomethane or synthesis gas from renewable energy resources may request a gas GO for the energy unit of the gas produced. No more than one gas guarantee of origin shall be issued for each unit of energy produced, and it shall be issued for a certain amount of energy - one megawatt hour (1 MWh).
- C.2.4 The EECS GO is an electronic document issued by Conexus upon application of the Account holder. Sole purpose of EECS GO is to prove that the unit of energy (gas) has been produced from renewable energy sources.
- C.2.5 The EECS GO may be accompanied with information on the compliance of the energy produced with the sustainability and greenhouse gas saving criteria (proof of sustainability) according to Paragraph 2 of Section 117.² of the Energy Law. Information on proof of sustainability shall be submitted at the request of EECS GO.
- C.2.6 The EECS GOs can be cancelled or transferred to other market participants 12 months after the production of the energy unit specified in the EECS GO. The EECS GO can be cancelled no

later than six months after its 12-month validity expires. The EECS GO is automatically deleted from the electronic register 18 months after the production of the relevant unit of energy specified in the EECS GO.

- C.2.7 Conexus shall publish information about issued EECS GOs on its website along methodology on calculating fees for use of EECS GO registry and fees themselves: (www.conexus.lv) (exact link will be provided later).
- C.2.8 The amount of EECS GOs to be issued shall be determined using remote measurement devices and is calculated as the net gas injected via the producer’s direct connection points to the interconnected gas system or Conexus centralized gas injection points to the gas transmission system during one calendar month period, described in more detail in section E.3. Conexus as a Measurement Body provides gas metering data directly to Conexus Registry.
- C.2.9 For off-grid produced gas, that is injected in interconnected gas system via centralized gas injection point operated by Conexus EECS GOs are issued based on all the same rules and principles applicable to gas injected via producer's direct connection points, as laid down in this Domain Protocol.
- C.2.10 For off-grid produced and off-grid consumed gas, that is not injected in interconnected gas system, GOs are issued based on the same rules and principles laid in this Domain Protocol, but they are limited to national circulation and cannot be transferred through AIB hub. In addition, off-grid production and consumption of gas must follow rules of the Cabinet of Ministers of the Republic of Latvia regulation, which determines the procedure for monitoring and accounting for the circulation of biomethane that is not injected into the interconnected gas system and set in accordance with Section 117.⁴ of the Energy Law,
- C.2.11 Providing proof to a final customer that a given share or quantity of energy was produced from specific energy sources, the EECS GOs issued in Latvia or in other Member States of the European Union or in other states which are AIB member and where registry is connected to the AIB data hub. The EECS GOs can be transferred from one Account Holder to another.
- C.2.12 In accordance with Energy Law, which states that Conexus shall manage GO system in accordance with EECS, Conexus can only recognize the EECS GOs issued in European Union Member States or countries which are AIB members and where registry is connected to the AIB data hub, that are members and connected to the AIB hub to ensure EECS GO cross-border transfer.

C.3 National Energy Source Disclosure

This section demonstrates compliance with the following EECS Rules:

E3.3.14			
---------	--	--	--

- C.3.1 For this Domain, the authorised body for supervision of Disclosure of the origin of energy towards consumers is Regulator. Regulator is responsible for supervision of disclosure of the origin of the following Energy Carriers: electricity and natural gas, including, biomethane.
- C.3.2 Paragraph 4 of Section 107.¹ of the Energy Law delegates Regulator the authority to determine what information and to what extent the gas trader shall include in the end-user bills and informative materials. Regulator describes in detail the methodology and process of

disclosure in following regulation: Decision No.1/16 of the Board of Public Utilities Commission of the December 3, 2020 “Rules on information to end-users of electricity and natural gas”, available at:

- C.3.3 Brief summary of the disclosure methodology and process:
 - C.3.3.1 The trader shall provide to end-consumer information, together with invoice or with other presented information and promotional materials.
 - C.3.3.2 Invoices and accompanying information materials that traders send to end-consumers shall contain, inter alia, the following information: the name of the natural gas product received; the average forecasted amount of natural gas consumption per month during the billing period in kWh; the amount of natural gas supplied during the billing period in kWh; natural gas price for the billing period, which includes transmission and storage system services [EUR/kWh]; charge for the use of distribution system [EUR], showing the unit value; the charge for the transmission system service at the exit point to Latvian domestic consumption [EUR/kWh], the date on which the monthly payment is due; the term of the natural gas trade contract; a comparison of the total amount of payments made by the end-user during the billing period with the calculated amount for the volume of services actually received; information on the weighted average gross calorific value of natural gas under standard conditions during the billing period [kWh/m³] for the conversion of the cubic metres of natural gas consumed into kilowatt-hours [kWh] or information on the website where the conversion of the m³ of natural gas consumed into kWh can be carried out; information on how to access detailed consumption information, information about gas origin and environmental impact.
 - C.3.3.3 At least once a year, no later than by 1st April, the gas trader shall provide end-consumers with access to informative material on the origins of natural gas supplied within the previous calendar year, by indicating:
 - a) information on the originating country of the natural gas or liquified natural gas supplied for the previous calendar year, if this kind of information is available to gas trader;
 - b) sources of the natural gas, including biomethane, in Latvia, if this kind of information is available to the trader.
- C.3.4 Cancellation for usage in another Domain (i.e., Ex-Domain Cancellations) is allowed under the following restrictions: Domain allows such cancellation and Conexus has agreement with Domains competent authority, if applicable. For information contact Conexus: (go@conexus.lv)

C.4 National Public Support Schemes

This section demonstrates compliance with the following EECS Rules:

None directly			
---------------	--	--	--

- C.4.1 Currently there are no National Public Support Schemes for gas production, consumption, production facilities in place in this Domain. According to Section 117.⁴ of Energy Law (https://likumi.lv/ta/id/49833/redakcijas-datums/2023/07/01#p117_4), Cabinet of Ministers determines rules for the off-grid gas and commercial activity support for gas obtained from renewable energy sources.

C.5 EECS Product Rules

This section demonstrates compliance with the following EECS Rules:

E6.2.1f	E6.2.1g		
---------	---------	--	--

- C.5.1 The EECS Product Rules as applied in Latvia are set out within sections Registration and Certificate Systems Administration of this document.
- C.5.2 For gas that is not injected in interconnected gas system (off-grid produced and off-grid consumed gas), upon request of Account Holder, GOs are issued by Conexus. These GOs are issued based on all the same rules and principles provided in this Domain Protocol, but they have special off-grid dissemination level and are only for national circulation, therefore cannot be transferred through AIB hub. In addition of need to be compliant with EECS Rules where applicable, off-grid produced and consumed gas must be in line with Regulation of the Cabinet of Ministers which are developed in accordance with Section 117.⁴ of Energy Law, available here: https://likumi.lv/ta/id/49833/redakcijas-datums/2023/07/01#p117_4. In April 2023, this Regulation of the Cabinet of Ministers is not adopted, yet.

C.6 Non-EECS certificates in the Domain

- C.6.1 There are GOs for off-grid produced and off-grid consumed gas, that are non-EECS certificates in this Domain. These GOs will be regulated by Regulation of the Cabinet of Ministers which will be developed in accordance with Section 117.⁴ of Energy Law, available here: https://likumi.lv/ta/id/49833/redakcijas-datums/2023/07/01#p117_4. In April 2023, this Regulation of the Cabinet of Ministers is not adopted, yet.

C.7 Local Deviations from the EECS Rules

- C.7.1 This section identifies those areas where there are minor differences from the EECS Rules without impacting the integrity of EECS Certificates.
- C.7.2 Gas EECS GOs are issued not only for Network-compatible Gas, but also for off-grid produced and transported to centralized grid injection points via trucks as compressed natural gas (CNG). These EECS GOs are issued according to the measured input at the centralized injection point into the system. Non-EECS GOs for off-grid produced and off-grid consumed gas are issued including information whether the output complies with specific criteria relating to the physical composition of the produced gas, referencing EECS Fact Sheet 21 Use of Gas Codes.

D REGISTRATION

D.1 Registration of an Account Holder

This section demonstrates compliance with the following EECS Rules:

G2.2.1			
--------	--	--	--

- D.1.1 Any private or legal person who is not a member of the Association of Issuing Bodies, or such member's affiliate or agent, can apply to be an Account Holder in the Registry. The procedures which include all information about requested attachments for opening an account in the Registry can be found on the Conexus website: <https://www.conexus.lv> (*exact web address will be added later*)
- D.1.2 In order to receive the right to use the Registry, the applicant must contract with Conexus under the STC which is published on the Conexus website: <https://www.conexus.lv> (*exact web address will be added later*)
- D.1.3 The applicant who wants to conclude the STC with Conexus must submit a completed submission form provided in Annex 2 (*will be created*) which is published on the Conexus website. Along with the application applicant shall provide the following data and documents: 1) contact details of the representative(s) having the right to assume obligations on behalf of the applicant (including full name, title, phone number, e-mail address), and documents proving the right of the representative(s) to act on behalf of the applicant; 2) a proof of representation, if the application is submitted by an authorised representative of the applicant; 3) a document attesting that the applicant has registered its commercial activity according to the laws and regulations of the relevant country; and 4) a document attesting that an insolvency procedure of the applicant has not been announced, the economic activity of the applicant is not suspended, or the applicant is not liquidated, and issued not later than one month prior to the day of submitting the application. Conexus checks if in relation to the applicant there are no sanctions imposed by a Member State of the European Union or of the North Atlantic Treaty Organisation affecting significant financial and capital market interests which could have an impact on the fulfilment of obligations under STCs.
- D.1.4 After the submission of the application in case of changes in the data or documents of the applicant, the applicant not later than within three business days, shall notify Conexus thereof.
- D.1.5 Conexus shall evaluate the application referred to in section D.1.3, the documents appended thereto within 10 working days from the date of receipt thereof. Conexus may request the applicant to submit the missing documents and additional information. If there are no missing documents or no additional information is needed, then Conexus shall prepare the STCs and shall send it to the applicant electronically.
- D.1.6 If Conexus has requested the applicant to submit additional information or documents, the applicant shall submit such within ten 10 working days from the date of dispatch of the request. If the applicant does not submit the requested additional information or documents within deadline specified in this section, the applicant shall be deemed to have withdrawn its application.

- D.1.7 If the applicant has submitted to Conexus all documents and additional information requested by Conexus pursuant to section D.1.6, Conexus shall within five working days from the receipt of the documents and additional information prepare the STCs and shall send it to the applicant electronically.
- D.1.8 The applicant shall return to Conexus a signed STCs electronically, or in two signed copies in case of the STCs signed in a written form, within 10 working days from the day of dispatch of the STCs. If the applicant does not return to Conexus a signed STCs within 15 business days from the day of dispatch of the STC, the applicant shall be deemed to have withdrawn its application.
- D.1.9 Conexus shall notify the applicant of refusal to conclude STC within one working day after the review of the application by sending a notice to the electronic mail address indicated in the application. Conexus shall send a motivated refusal to conclude the STC electronically or by post to the address indicated in the application.
- D.1.10 Following the conclusion of the STC, Conexus creates an Account in the Registry for the Account Holder. When the Account is activated, a log-in authorisation Certificate will be sent via e-mail to the applicant, awarding full rights to the created Account (root user). The password to install the Certificate will be sent via SMS. The applicant is then an Account Holder and can start operating the Account. One Account Holder can have multiple users.
- D.1.11 Conexus may hold an Account in the Latvian domain and may own a Certificate only for testing purposes, it will report such activity to the Association of Issuing Bodies.
- D.1.12 Information regarding service fees is available on Conexus website: www.conexus.lv (exact address will be updated later)

D.2 Resignation of an Account Holder

This section must demonstrate compliance with the following EECS Rules:

None directly			
---------------	--	--	--

- D.2.1 Resignations are handled on an ad hoc basis.
- D.2.2 The Account Holder must notify Conexus of the intent to close the Account. The effective date of closure must not be less than 30 working days from the date of receipt of the relevant notification by Conexus. This can be done by submitting via e-mail the form provided in Annex 2 with option "de-register Account" marked.
- D.2.3 Conexus will close the Account as of the effective date on the request or 30 working days from the date of receipt of the notification by Conexus whichever is later.
- D.2.4 The Account must not contain any EECS GOs at the time of closure and all financial claims that Conexus has towards an Account Holder must be settled before the closure of the Account. Conexus requires the Account Holder to transfer or cancel all remaining EECS GOs Certificates before closure. In the case the Account Holder owns GOs they are withdrawn by Conexus in the moment of closure.
- D.2.5 Conexus is not obliged to return already paid fees of the Account Holder.
- D.2.6 Conexus has the right to terminate the STC unilaterally if the Account Holder has been subject to international or national sanctions or sanctions imposed by a Member State of the

European Union or the North Atlantic Treaty Organization affecting significant financial and capital market interests during the performance of the STCt.

D.3 Maintenance of standing data

D.3.1 The Account Holder must notify Conexus without any delay, in writing of any changes due to come into effect that will result, or unplanned changes that have resulted, in the information recorded in the EECS Registration Database in relation to the Account Holder becoming inaccurate. Conexus will amend the EECS Registration Database accordingly.

D.4 Account Holder data Error handling

D.4.1 If Conexus detects errors in the Account Holder information, it will correct them without any delay. The relevant Account Holder will be informed of such actions.

D.5 Registration of a Production Device

This section demonstrates compliance with the following EECS Rules:

C2.1.1	C2.1.2	C2.2.4	D4.1.2	E3.3.10	E3.3.11		O6.2
--------	--------	--------	--------	---------	---------	--	------

D.5.1 The owner of a Production Device or an entity duly authorised by the owner, who is an Account Holder in the Registry, may register a Production Device connected to the Latvian interconnected gas transmission network and gas distribution network in the Registry. The entity duly authorised by the owner must provide evidence to the satisfaction of Conexus that it has the appropriate authority to register the Production Device and that it can comply with the requirements of the Product Rules with respect to the imposition of duties on the owner and/or operator of the Production Device. Every Production Device can only be registered once.

D.5.2 For an off-grid gas Production Device, which is not connected to the interconnected gas transmission network and gas distribution network and where gas will not be injected in the centralized biomethane injection point, in addition to registration and other rules described in this Domain Protocol, additional Cabinet of Minister Regulation apply, which in April 2023 is not adopted yet .

D.5.2.1 Production Devices can only be registered if they meet the qualification criteria for the relevant EECS product (hereby Conexus does not differentiate the requirements for only national transactions of the GOs (for off-grid produced and off-grid consumed gas) or international ones. Production Device requirements are always related to the EECS standard. The applicant for registration of a Production Device must provide Conexus with the following information:

- i. the applicant's name and address and additional contact details, including the name of the individual responsible for the application, phone number, and e-mail address;
- ii. the names of persons authorised to act for the Registrant;
- iii. the location of that Production Device, its name and address;
- iv. details of the Export Meter(s) for that Production Device;
- v. details of any production auxiliaries associated with that Production Device;

- vi. where there are production auxiliaries associated with that Production Device and the consumption of these auxiliaries is not determined by an Export Meter, details of Import Meter(s) which determine the totality of gas consumption by the Production Device;
- vii. The nature of the Production Device, in terms of technology,
- viii. Whether and to what extent the installation has benefited from support and the type of support scheme (for gas only type of support);
- ix. the Nominal Capacity of that Production Device;
- x. where at the time of such application it has been commissioned, the date on which that Production Device was commissioned;
- xi. on request by Conexus a diagram of that Production Device, including details of the location:
 - 1) the meter measuring the energy production of the Production Device;
 - 2) the Export Meter(s) for the Production Device;
 - 3) any transformer substations at the site of the Production Device;
 - 4) any producing auxiliaries for the Production Device; and
 - 5) any Import Meters for the Production Device;
 - 6) a description of how the amount of Net Gaseous Energy Production produced by that Production Device shall be calculated from the meter readings to be provided (in case of off-grid production);
 - 7) details of the location of any compression stations at the site of the Production Device

D.5.2.2 As the Production Device is registered into Conexus Registry, it is assigned a unique identifier. GSRN coding is used.

D.5.3 The Account Holder can apply for registration of a Production Device in the Registry. The account where EECS GOs are to be issued must be specified in Annex 3 (*will be updated*). Production Devices must be located in Latvia. The registration form is available on the Conexus website: www.conexus.lv (Annex 3) (*will be updated*). Information provided in Annex 3 must be verified by an accredited Production Auditor by signing the registration form (Confirmation from Production Auditor must be received by the Account Holder - the requirements and the link to the list of the Production Auditors is provided in Annex 1 which is published on the Conexus website www.conexus.lv (*will be updated*). Confirmation from the Production Auditor is valid for 12 months from issuing date. Production auditor makes periodical audits for Production Devices that are connected to the interconnected gas system and submits to Conexus verified information needed for Production Device registration and information is periodically updated. Production Registrar Conexus checks and signs the registration form if the submitted information coincides with information received from Production Auditor, Production Auditor information is no older than 12 months and Production Device has ceased to receive support no longer than 12 months.

D.5.4 Additional documents required for registration Production Device into the Registry are:

- D.5.4.1 In case whereby the applicant or its affiliate is not the owner or sole owner of the Production Device, registration of the Production Device can be done by a third person, it must include a power of attorney signed by (other) owner(s) of the Production Device. Conexus checks the data included in a power of attorney against information provided in the official Enterprise Register. In case of doubt Conexus can request additional documents.
- D.5.5 Conexus may request additional information for the registration if necessary, specifying the time limit within such information must be submitted.
- D.5.6 Only Production Devices capable of producing gas from renewable energy source and that are equipped with the required metering and quality control equipment complying with Directive 2014/32/EU of the European Parliament and of the Council of 26 February 2014 on the harmonisation of the laws of the Member States relating to the making available on the market of measuring instruments and Cabinet Regulation No. 212 Adopted 12 April 2016 Metrological Requirements for Measuring Instruments and the Procedures for the Metrological Control Thereof (available: <https://likumi.lv/ta/en/en/id/281520-metrological-requirements-for-measuring-instruments-and-the-procedures-for-the-metrological-control-thereof>) registered in the Registry. The Account Holder must specify the authorised Measurement Bodies (the gas grid operators) to which their Production Device is connected to in the registration form (Annex 3) (*will be updated*).
- D.5.7 For off-grid Production Devices where gas will not be injected in interconnected gas system registration additional Regulation of the Cabinet of Ministers apply, which in April 2023 is not adopted yet .
- D.5.8 Conexus checks that the application fulfils the national laws, EECS Product Rules and is filled in correctly. Information is verified based on available data for Conexus (information in application is confirmed by Production Auditor). In case of doubt regarding the Production Device or when Conexus considers it necessary, Conexus can inspect the Production Device on site themselves or request an inspection by inviting the Production Auditor . In such a case, the Production Auditor's costs shall be borne by Conexus.
- D.5.9 If the Production Device satisfies both the Latvian laws and the EECS Rules, passes an inspection and if all necessary application information is gathered, Conexus registers the Production Device in the Registry within 10 working days from point when complete registration information is received and confirms successful registration via e-mail. Successful registration enables the issuance of EECS GOs for the Production Device from start of the month when Production Device is registered, and Conexus informs the Account Holder accordingly. Should the potential Account Holder fail to submit the additional information on the request of Conexus, or the Production Device does not comply with Latvian laws or the EECS Rules, Conexus shall reject the application and inform the Account Holder via e-mail.

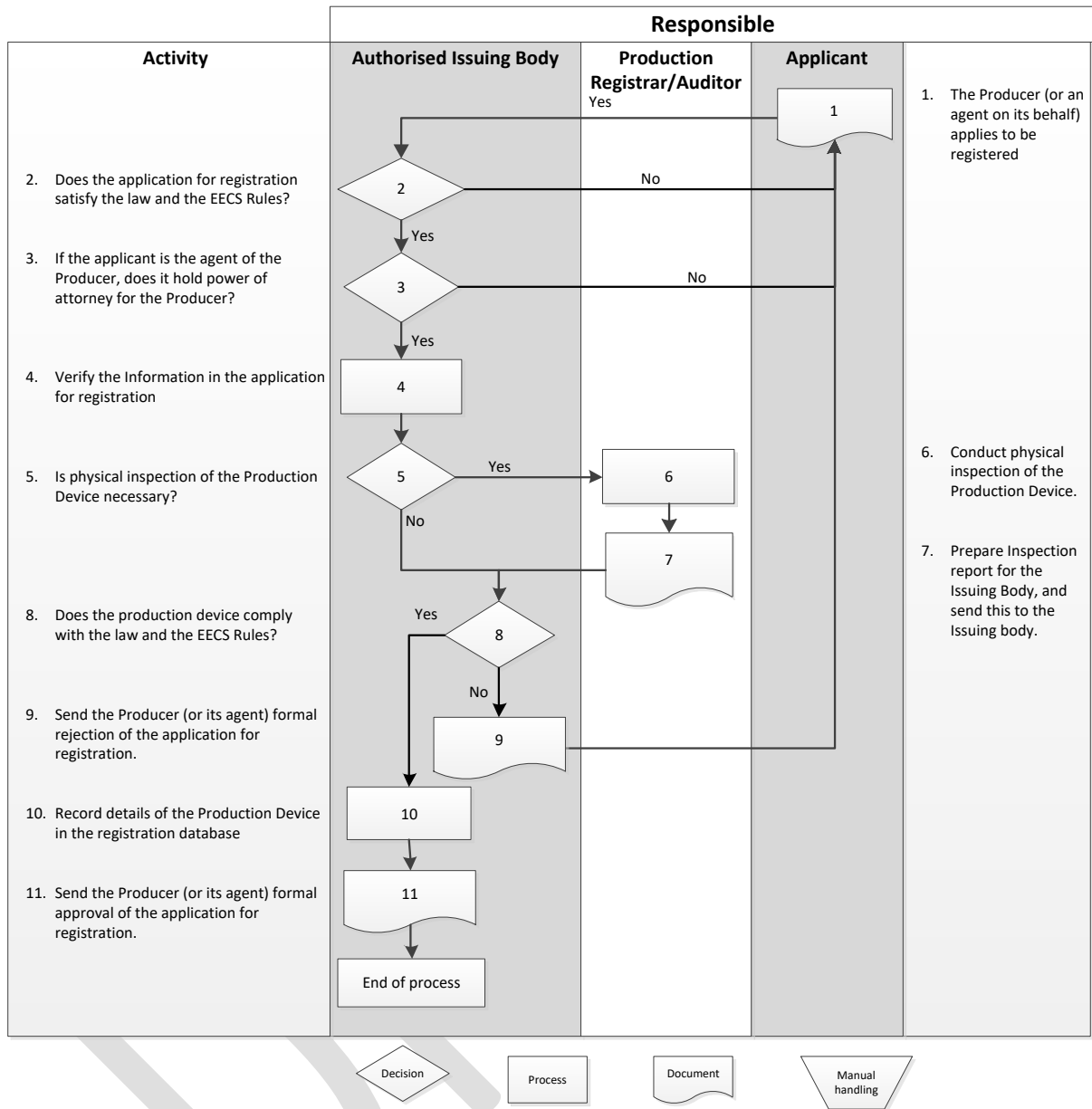
D.5.9.1 The Registrant must warrant that the information provided to the Production Registrar (Conexus) in connection with this application is complete and accurate and that the Production Device meets the qualification criteria for Guarantees of Origin in the Latvian Energy Law. The criteria are equivalent to the EECs Gas Scheme requirements. An application for the registration of a Production Device for the purposes of issuing GOs under the Gas Schemes will be rejected if:

- 1) In relation to that application, the applicant has failed to comply with any requirements of the Domain Protocol or the Standard Terms and Conditions;
- 2) There are one or more production auxiliaries for that Production Device not fitted with the Import Meters and lacking other satisfying registration method; or
- 3) The Production Registrar is prevented from satisfactorily verifying the application by the applicant or the owner of the relevant Production Device.

D.5.10 GSRN code is used for Production Device identification purposes and for Grid reference EIC (Energy Identification Codes) coding and metering point code is used. Public information relating to the Production Devices will be available in the Registry public registered Production Device list and access to full information will be available for the Account Holder (Production Device Owners or the Account Holder with Power of Attorney for Production Device) under the Account Holders profile in the Registry.

D.5.11 Information regarding service fees is available on the Conexus website: www.conexus.lv (*will be updated*)

(Following scheme will be updated)



D.6 De-Registration of a Production Device

This section must demonstrate compliance with the following EECS Rules:

None directly			
---------------	--	--	--

D.6.1 An Account Holder can apply for de-registration of a Production Device in the Registry. The effective date of de-registration must not be less than 30 working days from the date of receipt of the relevant application by Conexus. This can be done by electronically signing an Annex 3 and send to go@conexus.lv. In this case Production Auditor signature is not needed,

Conexus will respond to the Account Holder request within 10 working days and provide information of when the Production Device will be de-registered via e-mail.

- D.6.2 Conexus will update the Registry for that Production Device to show that the Production Device no longer qualifies for EECS GOs with effect as of the effective date on the request or 30 working days from the date of receipt of the application by Conexus, whichever is later.
- D.6.3 Conexus is not obligated to return already paid fees of the Account Holder. No additional fees are collected for performing the de-registering process.

D.7 Maintenance of Production Device Registration Data

This section demonstrates compliance with the following EECS Rules:

C2.2.1	C2.2.2	C2.2.3	C2.2.5	D5.1.2
--------	--------	--------	--------	--------

- D.7.1 The Registrant of a Production Device must notify Conexus of any planned changes due to come into effect that will result, or unplanned changes that have resulted, in:
- The information recorded in the registry in relation to the Production Device becoming inaccurate; or
 - The qualification criteria for the EECS Scheme ceasing to be satisfied with respect to that Production Device.
- D.7.2 In case of changes after Production Device registration the Account Holder is obliged to inform Conexus if the information no longer corresponds to submitted information in the Production Device Application/ Amendment Form (Annex 3) provided in registration process D.5 and/or latest version visible and active in the Registry. Amendments are made when the Account holder submits via e-mail to go@conexus.lv the signed (electronically) Application/ Amendment Form (Annex 3) with changes made and marked "Amend Production Device".
- D.7.3 Where the capacity of an existing Production Device increases for any reason, including refurbishment or enhancement of the Production Device, then in case added capacity has separate metering such additional capacity may be registered in the Registry as a separate Production Device with specified application process stated in D.5. In case added capacity does not have separate metering then existing Production Device information is amended by filling and submitting form available in Annex 3.
- D.7.4 Only Conexus can change the information in the Registry related to the Production Device. In the Registry, Production Device information revisions can be initiated by the Account Holder, but changes in the Registry are only made once Conexus approves them. The Account Holder can view the Production Device version status within the Registry, and in case of questions contact Conexus via e-mail: go@conexus.lv.
- D.7.5 Where Conexus becomes aware of a change in the Production Device Registration Data (following an inspection or otherwise), Conexus will evaluate the impact of the changes on the Qualifying Criteria and respond to the Account Holder within 10 working days specifying the decision taken. Conexus may "lock" the Production Device in the system until the updated information is provided. The Production Device may cease to be recorded in the Registry if the PD Qualification Criteria for EECS GOs are no longer fulfilled.
- D.7.6 Where Conexus becomes aware that a Production Device no longer fulfils, or will no longer fulfil the qualification criteria (meaning that the actual information does not correspond to

that provided to Conexus via forms set out in the Annex 3) the Registry record for that Production Device will be updated to show that the Production Device no longer qualifies for EECS GOs with effect from and in relation to:

- D.7.6.1 planned changes notified in advance - the date on which such planned changes are due to come into effect; or
- D.7.6.2 other changes - as soon as reasonably practicable after becoming aware.
- D.7.7 In order to qualify for EECS GOs the Production Device must be re-registered every five years otherwise registration of a Production Device automatically expires. The Account Holder must re-apply for registration for the Production Device before the expiry date of the current registration of the Production Device in question. The Account Holder must provide the same documents as in section D.5. Conexus will thereby re-check provided application and documentation and proceed to re-register the Production Device in the Registry as of the effective date on the request or the first day of the next calendar month in which Conexus received the request.

D.8 Audit of Registered Production Devices

This section demonstrates compliance with the following EECS Rules:

E3.3.7	E3.3.8	D5.1.2	
--------	--------	--------	--

- D.8.1 Gas Production Devices are inspected every year to confirm the Input source (injection data) and audited at least every five years.
- D.8.2 The Production Devices that are registered in the Registry can be subject to an unplanned and planned audit.
- D.8.3 A Production Auditor must verify the production method of a Production Device in the manner required by legislation, as well as the Inputs used by it, and prepare a certificate of verification before Guarantees of Origin can be issued for the Output produced by the Production Device.
- D.8.4 Registrants must notify of all changes to the information concerning the Production Device. This is particularly important as regards information concerning changes in ownership and metering. If a Production Device does not fulfil the verification requirements, or if the registration information has changed significantly, Guarantees of Origin are not issued until corrective measures have been taken.
- D.8.5 The Production Auditor may perform an on-site audit and inspection of Production Device records. Unplanned audits on Production Devices are conducted on an ad-hoc basis where there is reason to believe that the conditions of registration are no longer fulfilled. Conexus can perform or delegate to the Production Auditor to perform a planned audit in the case that Conexus considers it necessary. Refusal to permit access to the Production Device site or records may be considered a breach of the Standard Terms and Conditions.
- D.8.6 If the Audit identifies material differences from the details recorded in the Registry, the Account Holder must re-apply for registration of the Production Device and EECS GOs will not be issued for respective Production Device before corrective actions have been performed.

- D.8.7 Inspections verify that the Measurement Devices are correctly positioned in order to measure the quantity needed for calculating the amount of EECS GOs to be Issued.
- D.8.8 Inspections confirm the accuracy of the Measurement Devices involved in the calculation of the amount of EECS Certificates to be Issued to be acceptable in accordance with the existing regulatory framework and applicable standards.
- D.8.9 Inspections confirm that the formula for calculating the amount of EECS Certificates correctly reflects the amount of Output that qualifies for the Purpose of these EECS Certificates.
- D.8.10 Audit of registration information is done by the Production Auditor who is independent of the owner or the Account Holder of the Production Device. This is a precondition for registration of Production Devices in the Registry.
- D.8.11 The Account Holder is always responsible for the information provided to Conexus and the Account Holder must ensure that the relevant information in forms Annex 3, Annex 4 and Annex 5 provided to Conexus is confirmed by the Production Auditor.
- D.8.12 The Account Holder is always responsible for reporting changes to the respective Production Device, approved to receive EECS GOs, to Conexus and to the relevant Authorised Measurement Body.
- D.8.13 Conexus will request Production Auditor stating that the registration continues to satisfy the criteria above. In case the Production Device does not make the audits on time, the permission to issue GO is expelled and no GOs can be issued for that Production Device any more until the documentation of a valid audit is given to Conexus and information is updated in the Registry.
- D.8.14 One of the Production Auditor's roles is to verify Production Volume Declarations to Conexus for the purposes of GO issuing. This is to ensure the continued fulfilment of the conditions of registration.

D.9 Registration Error/Exception Handling

This section demonstrates compliance with the following EECS Rules:

C2.2.2	E4.2.7		
--------	--------	--	--

- D.9.1 The Conexus can check at any time a Production Device that produces gas from a renewable source, to determine whether the gas is produced from a renewable energy source and whether the measurement of the produced gas, which is injected into the gas network, and EECS Domain Protocol other measures necessary for the production from renewable energy sources as mentioned in the application file, corresponds with reality by performing unplanned audit described in D.8.3.
- D.9.2 Any errors in EECS GOs resulting from an error in the registered data of a Production Device will be handled in accordance with section E.9
- D.9.3 Where Conexus determines that the Account Holder is in breach of the Product Rules or determines that a Production Device does not meet Production Device Qualification Criteria for an EECS Product in relation to which it is registered, Conexus shall take such action as is necessary (by informing the Account Holder) to ensure that it is compliant with the EECS Rule's section E3.3.9(b), such action include, in the case of material non-compliance by the

Account Holder, the withdrawal of registration of the relevant Production Device for the purposes of that EECS Product.

- D.9.4 Conexus informs AIB of such a breach if it could affect the transfer of EECS GOs out of the Registry from the Latvian Registry into the EECS Registration Database of another Member.

DRAFT

E CERTIFICATE SYSTEMS ADMINISTRATION

E.1 Issuing EECS Certificates

This section demonstrates compliance with the following EECS Rules:

A2.1.1	A2.1.2	C3.1.1	C3.2.1	C3.3.1
C3.4.2	C3.4.4	E3.3.10		O3.1.1

- E.1.1 In accordance with section B.1.4, the EECS GO is the only official EECS product in Latvia. Alteration of EECS GOs is not possible, as the system is under the responsibility of Conexus.
- E.1.2 Only Production Devices registered in the Registry and that are connected to the interconnected gas distribution network or gas transmission network are allowed to request EECS GOs. If the Production Device is not in the Registry, Conexus has no information of the Production Device or its metering, it is impossible to issue EECS GOs. Metering of Production output is done by the Authorised Measurement Bodies (more in E.3).
- E.1.3 An EECS GO shall be issued per unit of gas produced from renewable energy sources and supplied (injected) to the gas network. The face value of one issued EECS GO is one full MWh, at the upper calorific value. EECS GO shall be issued only for Production Devices fulfilling qualification criteria described in section D.3. and for output fulfilling measurement criteria described in section E.3.
- E.1.4 Any kilowatt hours in excess of full megawatt hours are transferred to the next production period. If the production volume during a calendar month is less than one megawatt hour, EECS GO is issued for the calendar month during which the production volume reaches the threshold of one megawatt hour. Issuing, transferring and cancelling EECS GO must be executed in such a manner that other EECS GOs are not used for the same produced energy i.e. each energy unit shall be considered only once.
- E.1.5 EECS GOs are issued for the total nett amount of gas produced by the Production Device and supplied to the gas network in Latvia during one calendar month period. Account Holder can request for EECS GO issuance up until 12 months from the production period end date. EECS GOs are then issued with a shorter expiry period which correspond to end of respective production output (month).
- E.1.6 GOs for off-grid produced and off-grid consumed gas are issued for the total nett energy produced by the Production Device during one calendar month period. It is possible to request EECS GO issuance for off-grid rared, up until 12 months from the production period end date. EECS GOs are then issued with a shorter expiry period which correspond to end of respective production output (month).
- E.1.7 EECS GOs are issued
- for energy production that fulfils the EECS GO criteria after the Production Device has been registered in the Registry.
 - for a validity of 12 months at a time. The 12-month validity of EECS GOs starts at the end of the calendar month when the gas was produced.
 - for an Account Holder, which does not have overdue payments to Conexus relating to EECS GOs.

- E.1.8 A EECS GOs can only be issued for production that fulfils the requirements of the Energy Law of Latvia, EECS Rules. In case of off-grid produced gas, that is not injected into the interconnected gas transmission network and gas distribution network, only national GO will be issued, in accordance with national Regulation of Cabinet of Ministers that are developed in accordance with Energy Law Section 117.⁴ of Energy Law, and after Conexus has received production data concerning the production.
- E.1.9 GOs issued for gas production that take place before Conexus is an official AIB member are prevented from export through the AIB Hub as they are not classified as EECS GOs and may not be converted to an EECS GOs.
- E.1.10 Conexus will not issue EECS GOs to an Account Holder which is in debt to Conexus for unpaid invoices at the time when the request for issue of the EECS GOs is submitted.
- E.1.11 Issued EECS GOs are by default sent to Account Holders default Transferable account. Transferable accounts can be changed in the Registry.
- E.1.12 The EECS GOs information defined in this document does not change after a EECS GOs has been issued, except for the information that the validity of a EECS GOs has ended, or that a EECS GOs has been cancelled or it has expired.
- E.1.13 An EECS GO shall only be issued in respect of output which has not been and is not being otherwise Disclosed, including by the Issue of any other Certificate of any variety.

E.2 Processes

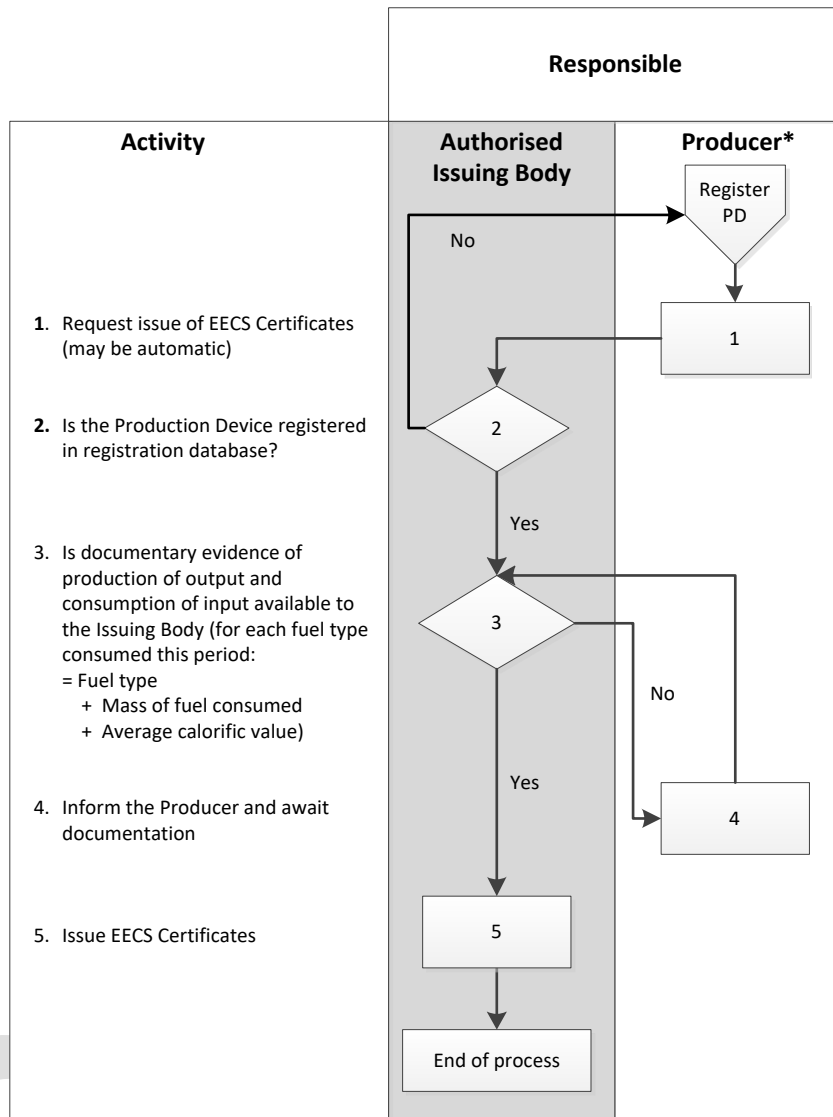
This section demonstrates compliance with the following EECS Rules:

A.4	C3.4.1	C3.4.3	C3.5.1	C3.5.2
C3.5.3	C4.1.1	C4.1.3	D7.1.2	E.2
	O6.4			

- E.2.1 GOs are only issued for Production Devices situated in Latvia and registered in the registration database of Conexus.
- E.2.2 The GO shall be issued in such format as may be determined by AIB.
- E.2.3 The Account Holder should request issuance of EECS GOs in the Registry. Request of issuance for the Account Holder is possible through the Registry, where the Account Holder can see if the metering data of the net gas injected into gas network for the Production Device is available and then request the issuance of EECS GOs or send electronically signed letter with request document where is listed Production Device GSRN number, name of Production Device, production period, requested EECS GO product type and amount to be issued.
- E.2.4 EECS GOs are issued for the monthly total nett energy units supplied to the gas network in Latvia. Nett Gas Production means the gas produced by a Production Device as evidenced by measured values collected and determined by an Authorised Measurement Body with reference to its Import and Export Meters (adjusted by meter amendments and the outcome of any disputes) minus the demand of any Production Auxiliaries and minus losses due to heating, compression and pumping on the site of the Production Device

- E.2.5 EECS GOs for gas shall only be Issued for Nett Gas Production. EECS GOs shall not be Issued in respect of gas consumed by Production Auxiliaries. If there is more than 2% of energy consumption from another energy carrier related to the production of Output, this shall be taken into account in the determination of Output.
- E.2.6 GOs for off-grid produced and off-grid consumed gas are issued in accordance to E.1.6. and relevant Cabinet of Minister Rules.
- E.2.7 In case of any doubts about the accuracy of meter readings and all declarations, Conexus will not issue EECS GOs for that Production Device. After this Conexus contacts the Account Holder to find out if the discrepancy can be resolved. Issuance may only be done when discrepancies have been resolved.
- E.2.8 Conexus will issue the EECS GOs in the Registry only after receiving data mentioned in E.2.4 or for off-grid produced and consumed gas Conexus will issue GOs after receiving data mentioned in E.2.6.
- E.2.9 EECS GOs issuing will take no longer than 8 working days from the initial request for issuance or from the point in time when all information listed in E.2.6. is received. In cases issuance request exceeds 320 unique requests (unique request consists of request for one Production Device in one production period) then issuing process can take proportionally longer period (for instance, 9 days for 360 unique requests).
- E.2.10 The Account Holder shall receive information in the Registry of the issuance of EECS GOs into the Account Holder's Transferable Account and the EECS GOs details.
- E.2.11 The Account Holder of a Transferable Account should be treated (as between the Account Holder and that Member) as the owner of the EECS Certificates.
- E.2.12 Each EECS Member shall ensure that its manual and automated information systems for the Issue, holding and transfer of EECS Certificates are able to support audit of all transactions with respect to EECS Certificates.
- E.2.13 Each Member shall use in connection with any EECS Scheme the EECS Registration Database and Transfer Links approved for the purposes of that EECS Scheme.

(following scheme will be updated)



* The Producer is the generic term for the party which requests certificates, and might include production aggregators, portfolio managers etc.

E.3 Measurement

This section demonstrates compliance with the following EECS Rules:

D6.1.2		O6.4	
--------	--	------	--

E.3.1 The gas metering equipment installed at Exit Measurement Point shall conform to the requirements laid down in the laws and regulations regarding the procedures for performing approval, primary verification and market supervision of the type of means of measurement, as well as in the laws and regulations regarding metrological requirements for means of

measurement. National Law On Uniformity of Measurements:

<https://likumi.lv/ta/en/en/id/42562-on-uniformity-of-measurements>.

- E.3.2 In case of off-grid produced gas, which is not injected into the interconnected gas transmission network and gas distribution network, the Measurement Bodies shall be described in the legal acts, such as in the Regulation Cabinet of Ministers which will be developed in accordance with Section 117.⁴ of Energy Law, available here: https://likumi.lv/ta/id/49833/redakcijas-datums/2023/07/01#p117_4. In April 2023, this Regulation of the Cabinet of Ministers not adopted yet.
- E.3.3 Issuing of GOs for gas is based exclusively on Export Meter readings.
- E.3.4 Production data for a Production Device connected to the gas distribution network: Conexus receives the energy data in megawatt hours (MWh) from designated Export Meter and EECS GOs are issued on the basis of this data. The data is entered in (transferred to) the Registry at the accuracy of three decimals at the highest. The cumulative accrual of decimals is monitored in the register.
- E.3.5 Production data for a Production Device connected to the gas transmission network: Conexus receives the data concerning production connected to gas transmission network directly from designated Export Meter. EECS GOs are issued on the basis of this data. The data is entered in the Registry at the accuracy of three decimals at the highest.
- E.3.6 The delivery of data concerning hydrogen production fed into the network will be determined later when the hydrogen network solutions are completed.
- E.3.7 Off-grid gas produced, which is not injected into the interconnected gas transmission network and distribution network: Conexus receives the production data used as the basis for issuing GOs from the Production Device in a separately defined electronic format or via a separate user interface. GOs are issued for full megawatt hours on the basis of the upper calorific value. The data is entered in the Registry at the accuracy of three decimals at the highest.
- E.3.8 No arrangements applied to estimate and/or adjust line losses in meter readings.
- E.3.9 EECS GOs representing the source of the energy used by Production Auxiliaries and lost by storage auxiliaries will be automatically cancelled upon issue. Information on these EECS GOs shall be provided at the request of EECS GOs issuance.

E.4 Energy Storage

This section demonstrates compliance with the following EECS Rules:

	C3.2.2	C3.6	
--	--------	------	--

- E.4.1 Gas can be stored any period of time in the storage, but validity time period of EECS GO is limited and described in section C2.6., as afterwards the life time of EECS GOs expire.
- E.4.2 No EECS GOs are cancelled at the Input and issued for the Output of an energy storage device.

E.5 Energy Carrier Conversion

This section demonstrates compliance with the following EECS Rules:

C3.2.2	C3.5.4(u)	C3.6	
--------	-----------	------	--

E.5.1 There is no energy carrier conversion in Latvian Domain. Conversion is not regulated by national legislation.

E.6 Combustion Fuel (e.g., Biomass) Input and Production Devices with multiple energy inputs

This section demonstrates compliance with the following EECS Rules:

	O6.3.2		
--	--------	--	--

- E.6.1 The registrant must fill in the consumption declaration in the Registry (Annex 4).
- E.6.2 The calculation of combustion fuels is verified and approved by an Independent Auditor.
- E.6.3 For Production Device reporting the total production into the gas network (nett production) is measured by Conexus.
- E.6.4 For a Production Device reporting the total production with multiple energy sources, the Account Holder will have to report in detail on the input factors and provide verification of the declaration from the Production Auditor prior to issuing of EECS GOs. The standard calculation set out in the EECS Rules section O6.3.2 is applied. The template of a production/consumption declaration can be found in Annex 5.
- E.6.5 All combustible fuel inputs (where needed) are separately measured and required to be submitted by the Account Holders in tonnes or 1000 m3 and the lower calorific values of the fuels in MJ/kg or in MJ/m3.
- E.6.6 In a Consumption Declaration (Annex 5) for each combustible Input, the following must be specified:
- E.6.6.1 The values of $I_1 \dots I_n$, and where applicable, the values of $M_1, C_1 \dots M_n$ and C_n ; and
- E.6.6.2 the Energy Input Factor L_i for that Input and that period, where L_i is the proportion of the total Output produced during this period by the relevant Input and is calculated as follows:

$$L_i = \frac{I_i}{I_1 + \dots + I_n}$$

Where :

I_i is the energy content of the relevant Energy Input for that Production Device during that period;

$I_1 \dots I_n$ is the energy content of each Input other than the relevant Input for that Production Device during that period;

In case the Input is a primary energy source in the form of a material input with energy content, I_1 shall be determined as M_1 multiplied by C_1 , I_i shall be determined as M_i multiplied by C_i , ..., and I_n shall be determined as M_n multiplied by C_n ; where:

M1 - is the mass of the material that is fed into the Production Device as the relevant Energy Input for that Production Device during the relevant period where the Inputs are liquid and/or solid. Where the Inputs are a mixture of gases, their volume shall be used rather than their mass;

C1 is the average calorific value of the relevant Energy Input for that Production Device during the relevant period;

M1...n is the mass of each material that is fed into the Production Device as the Input other than the relevant Input for that Production Device during the relevant period where the Inputs are in liquid and/or solid phase. Where the Inputs are a mixture of gases, then the volume shall be used instead of the mass; and

C1...n is the average calorific value of each Input other than the relevant Input for that Production Device during the relevant period.

E.7 Format

This section demonstrates compliance with the following EECS Rules:

C3.5.4	C3.5.5			O7
O8	C3.4.4	E3.3.10		O3.1.1

E.7.1 EECS GOs in addition to mandatory information of EECS Rules v1.2 in sections C3.5.4 and C3.5.5 may contain the following optional information:

E.7.1.1 the greenhouse gas emissions intensity of the Output relating to the Nett Gas Production, as in section C3.5.5(b) in EECS Rules, and a reference to the methodology used to calculate this information, as identified in EECS Rules Fact Sheet “GHG Methodology Reference”; and

E.7.1.2 data regarding the greenhouse gas emissions saved relating to the Nett Gas Production and a reference to the methodology used to calculate this information, as identified in EECS Rules Fact sheet “GHG Methodology Reference”;

E.7.1.3 Whether or not greenhouse gas emission savings criteria are met, as referred to in the Renewable Energy Directive;

E.7.1.4 Whether or not the Production Device complies with the applicable sustainability criteria, together with (one or multiple references):

- (i) a reference to the legislative or other source that sets sustainability requirements, and
- (ii) a reference to the relevant sustainability certification scheme(s), and
- (iii) an indication as to whether these criteria have been met, and
- (iv) a reference to the certification body which confirmed that this is the case, and
- (v) a reference to the relevant reports, certificates or other documents produced by this certification body under the sustainability certification scheme(s);

- E.7.1.5 the Gross Calorific Value for calculating the MW of Output;
- E.7.1.6 End-use of the Gas, as set out in EECS Rules Fact Sheet “Use of Gas”:
 - (a) Transport
 - (b) Production of heating or cooling
 - (c) Production of electricity
 - (d) Input to chemical processes
 - (e) Input to industrial and manufacturing processes.
- E.7.1.7 Where the Source Type is an energy source of biological origin, an indication whether or not this energy source originates from an Advanced Biomass Feedstock, according to the feedstocks listed in Annex IX of the Renewable Energy Directive.
- E.7.2 EECS GO may contain additional information on GHG emissions and sustainability, including information on certification body, scheme, audit report and additional information which include reference to the relevant document, that is proof of sustainability of gas produced.
- E.7.3 EECS Certificates shall be Issued in such format as may be determined by AIB and specified in EECS Rules v1.2 in sections C3.5.4 and C3.5.5.

E.8 Transferring EECS Certificates

This section demonstrates compliance with the following EECS Rules:

C5.1.1	C5.1.3	C5.1.6	
--------	--------	--------	--

- E.8.1 An Account Holder will get secure electronic access to their Account as stated in section D.1.5 to make transfers of EECS GOs to another Account in the Registry (national) or to another EECS Registration Database in another Domain through the AIB Hub (international).
- E.8.2 Only persons duly authorized by the Account Holder may request the transfer of EECS GOs from that Account Holder’s Transferable Account. Authorized persons must be identified on the account application form (Annex 2). Authorized persons can also be added by the root user(s) of that Account Holder.
- E.8.3 In accordance with Latvian law, from Latvia EECS GO Registry there can be sent only GOs that fulfils EECS GOs requirements and can be received only EECS GO compatible certificates.
- E.8.4 The initiation of transfers is done in the Registry by the selling Account Holder. The transfer form shall be filled out by the selling Account Holder (whether it is the Producer itself or an Account Holder with power of attorney) containing the following data:
 - E.8.4.1 The amount of EECS GOs to be transferred;
 - E.8.4.2 Domain of the receiving Account Holder;
 - E.8.4.3 Receiving Account Holder.
- E.8.5 The transfer of EECS GOs and the confirmation of that transfer is automated. After the Account Holder has initiated the transfer, the Registry instantly displays a message of whether or not the initiation has been successful. The EECS GOs are automatically transferred to the receiving account if the initiation of the transfer is successful. If the initiation of the transfer is not successful, the EECS GOs do not leave the Account of the

original Account Holder. In transfers between Accounts located in different Registries, the success of the transfer is subject to the verification process of the AIB Hub and the receiving Registry. When EECS GOs are in transit they are not available for another transfer. If the transfer is not successful, the EECS GOs return to the Account of the original Account Holder.

- E.8.6 EECS GOs that have been cancelled or expired are not available for transfer.
- E.8.7 Once an EECS GOs has been held in the registry of a non-Hub User, it may not be transferred through the Hub. Conexus is only allowed to use the Hub when transferring EECS GOs to another Hub User, excluding other means of transfer or separate arrangements in this respect.
- E.8.8 Ex-domain exports are handled as cancellations, where the beneficiary of the cancellation is located in another Domain or country, that is not connected with AIB Hub and respective Issuing body has signed agreement with Conexus for ex-domain export/import.
- E.8.9 Ex-domain imports are handled outside the Registry for EECS GOs (see also E.10.3), information about imports of EECS compliant GOs is saved in separate database. Ex-domain imports are allowed if Domain or country is not connected with AIB Hub and respective Issuing body has signed agreement (AIB standard agreement form to be used) with Conexus for ex-domain export/import.
- E.8.10 There are no restrictions for transfer via AIB Hub of EECS GOs – all energy carriers and certificate types allowed, except for GOs that are issued for gases which are off-grid produced, off-grid consumed and not injected into the interconnected gas transmission network and gas distribution network.

E.9 Administration of Malfunctions, Corrections and Errors

This section demonstrates compliance with the following EECS Rules:

C5.1.7	C8.4.1	C8.4.2	C8.4.3	C8.5.1
D9.1.2				

- E.9.1 Once issued, the details of an EECS GOs cannot be altered or deleted, except to correct an error.
- E.9.2 Conexus has the right to perform corrective actions such as the transfer of EECS GOs in the Registry where EECS GOs have been erroneously transferred.
- E.9.3 Conexus has the right to perform corrective actions such as the withdrawal of EECS GOs from an Account in the Registry where EECS GOs have been erroneously issued. Conexus has the right to recover the cost of securing the agreement of another Account Holder to the Withdrawal of Certificates of the same type from that other Account Holder's Transferables Account, where the EECS GO is not in the Transferables Account of that Account Holder, so that, as far as reasonably practicable, EECS GOs are withdrawn with an amount and a financial value which make good the discrepancy.
- E.9.4 Conexus has the right to correct an account number for an incoming transaction if the account number is not a transferable account number and correct account number can be identified.

- E.9.5 If an error occurs in the measurement data on which EECS GOs are created, Conexus will correct this error. If EECS GOs are wrongly issued, i.e. a larger quantity, and traded, the error will be corrected in future, issuing a smaller amount of EECS GOs in the next period.
- E.9.6 Where it is impossible to transfer for technical reasons, this can be overcome by cancelling EECS GOs for use in another domain, subject to an agreement between Conexus and the importing Issuing Body.
- E.9.7 Conexus shall correct all errors in or with respect to the EECS GOs in question provided that such EECS GOs have not been transferred out of that Transferable Account.
- E.9.8 Conexus may alter an EECS GO held in its Registry so as to rectify an error which occurred prior to its transfer into the Account in which it is held at such time, provided:
- a) the Account Holder has agreed to such alteration;
 - b) it is reasonably satisfied that any unjustified benefit of an EECS Market Participant as a consequence of such error has, to the extent reasonably practicable, been nullified; and
 - c) it is reasonably satisfied that the alteration itself does not give rise to unjustified benefit to the Account Holder.
- E.9.9 In the case where the EECS GOs are no longer in the Latvian domain, or in the case where erroneous EECS GOs are transferred to the Latvian domain from another Domain, Conexus will cooperate with other Issuing Bodies to withdraw or correct the erroneous EECS GOs.
- E.9.10 An Account Holder or market participant involved in a transaction with an Account Holder from the Latvia Domain can report an issue by submitting identified malfunctions, errors or requested corrections via e-mail to go@conexus.lv. If possible, Conexus will resolve the issue in five working days and inform the Account Holder of the resolution. If the issue can not be resolved within five working days Conexus, will respond to the e-mail to inform how this issue will be tackled and the estimated time to resolve it.
- E.9.11 Except in case of fraud, no rectifications may take place more than one year after issuing of GO.

E.10 End of Life of EECS Certificates – Cancellation

This section demonstrates compliance with the following EECS Rules:

C5.2.3	C6.1.1	C7.1.1	C7.2.1	C7.2.2
C7.2.3	C7.3.1	E3.3.10		O3.1.1

- E.10.1 Cancellation is removing EECS GOs from circulation. Once cancelled, EECS GOs cannot be moved to any other account, and so they are no longer tradable (transferable). Expired EECS GO are not valid for cancellation or transfer as the Registry automatically expires EECS GOs according to the Expiry rules described in E.11.
- E.10.2 EECS GOs can be cancelled for use in the Latvian domain. Cancellation can be made for consumption for previous year up to 1st April in current year and cancellations for future use can be made only for consumption in current year.
- E.10.3 EECS GOs may be cancelled for use in other EECS GOs Domains provided that the transfer of such EECS GOs is not possible to the other Domain, and there is a Cancellation Agreement in place with the Scheme Member of that other Domain. Such Cancellation Agreements require

the provision by the Cancelling Scheme Member to the Scheme Member of the other Domain of statistical information concerning Cancelled EECS GOs and the inclusion on any related Cancellation Statement of the identity of the Domain, Account Holder and purpose for which the EECS GOs were Cancelled.

- E.10.4 EECS GO can be cancelled for use in countries that are not connected to AIB Hub ex-domain cancellations.
- E.10.5 Account Holders possessing EECS GOs in the Registry, can perform cancellations by executing the transaction in the Registry. The Account Holder must specify the EECS GOs to be cancelled as well as the country of consumption, cancellation purpose, usage category, name, type and location of beneficiary and related consumption period. The Account Holder may choose to cancel part of or all of a given certificate bundle or several bundles.
- E.10.6 The cancellation of EECS GOs is automated using the cancellation functionality in the Registry. An EECS GOs can only be cancelled once and when the EECS GOs have been cancelled they are taken out of circulation and are not available for transactions. Cancelled EECS GOs are removed from the transferable account by changing their status to “cancelled”; they do not appear in any Account of the Registry after the Cancellation. The Account Holder performing the cancellation has full access to see the details of the cancellation process in the Registry or Account Holder can order an official Cancellation Statement from Conexus (Annex 7).
- E.10.7 Having performed a cancellation, the Account Holder receives confirmation of a successful or failed cancellation process instantly in the Registry.
- E.10.8 Each month Conexus will provide the Secretary General of AIB with a statement of the number of EECS GOs cancelled under the provisions EECS rules E.3.3.4. Eligible for cancellation are only EECS GOs from renewable sources.

E.11 End of Life of EECS Certificates – Expiry

This section demonstrates compliance with the following EECS Rules:

C5.2.3	C6.1.1c	E6.2.1h	
--------	---------	---------	--

- E.11.1 EECS GOs expire 12 months after the end of the related production period during which the relevant energy unit (Output) is produced.
- E.11.2 EECS GOs which have expired are no longer valid for transfer. The expiry-warning period is set to 30 days in the Registry. If the Account Holder does not react by cancelling the EECS GOs or transferring (selling) the EECS GOs to someone who then cancels them, then the EECS GOs will expire. According to Latvian Energy Law, it is possible after expiry of 12 months, still cancel EECS GO, not exceeding 18 months overall. No operations will be possible on these EECS GOs after 18 months.

E.12 End of Life of EECS Certificates – Withdrawal

This section must demonstrate compliance with the following EECS Rules:

C5.2.3		C6.1.1	C8.2.1	
--------	--	--------	--------	--

E.12.1 EECS GOs which have been withdrawn are no longer valid for transfer.

E.12.2 Conexus may withdraw a EECS GOs held in an Account on its Registry at the request of the Account Holder of that Account, or otherwise in accordance with the provisions of the EECS scheme as described in section E.9.

DRAFT

F ISSUER'S AGENTS

F.1 Production Auditor

This section must demonstrate compliance with the following EECS Rules:

None directly			
---------------	--	--	--

F.1.1 The Production Auditor verifies and approves information which is provided in forms (Annex 3, Annex 4 and Annex 5). Production Auditors use industry best practices and also include on-site inspection. Charges for Production Device services are concluded based on mutual agreement. Conexus has no responsibility in relation to Production Auditor charges for services. Requirements and link to the list of the Production Auditors is available in Annex 1.

F.2 Production Registrar

This section must demonstrate compliance with the following EECS Rules:

None directly			
---------------	--	--	--

F.2.1 Conexus acts as the Production Registrar and is responsible for assessing applications to register Production Devices for the purposes of the relevant EECS Product and national law.

F.3 Measurement Body(/ies)

This section demonstrates compliance with the following EECS Rules:

H			
---	--	--	--

F.3.1 The role of the Measurement Body is described in B.3.3 and its functions in Latvian Gas Domain described under section E.3.

G ACTIVITY REPORTING

G.1 Public Reports

This section demonstrates compliance with the following EECS Rules:

E3.3.4	HPA section 14.2		
--------	------------------	--	--

G.1.1 Statistical information on issued GOs is published on the following website www.conexus.lv (*web link will be updated*). Conexus ensures the confidentiality of the information provided by the EECS Market Participants and compliance with personal data legal protection requirements in the publication of all information.

G.2 Record Retention

This section demonstrates compliance with the following EECS Rules:

A12.1.1	C5.1.2	D8.1.2	
---------	--------	--------	--

G.2.1 Conexus shall retain all records to which Conexus has had access to, relating to any EECS GOs on Conexus Registry for not less than 10 years after EECS GO's Cancellation or Expiry or for a period that may be required by applicable national legislation.

G.3 Orderly Market Reporting

This section demonstrates compliance with the following EECS Rules:

E4.2.5	E4.2.6	E4.2.7	
--------	--------	--------	--

G.3.1 Conexus shall inform the AIB of any relevant changes in legislation regarding the EECS scheme concerning the Output in Latvia, especially if such changes are related to this Domain Protocol.

G.3.2 Conexus shall enforce the rules in relation to any act of non-compliance. Conexus shall provide all required information to AIB to resolve or investigate such action.

G.3.3 If Conexus becomes aware that the EECS Market Participant fails to comply with the Product Rules or Standard Terms and Conditions to the extent that such non-compliance breaches Competition Law, or any applicable law governing the conduct of financial markets, then Conexus shall report it to relevant national authority. Conexus shall report to AIB of such incidents to extent that it does not breach Conexus duty of confidentiality to the relevant EECS Market Participant.

G.3.4 If Conexus determines that an EECS Market Participant is in breach of the Product Rules or determines that a Production Device does not meet PD Qualification Criteria for an EECS Product in relation to which it is registered, then Conexus shall:

- G.3.4.1 take action to secure that EECS GO issuance is not done for Production Devices that fail to meet Product Rules and PD Qualification Criteria. Such action to include, in a case of material non-compliance by the EECS Market Participant, the withdrawal of registration of the relevant Production Device for the purposes of that EECS Product; and
- G.3.4.2 notify the AIB of such breach where Conexus is of the reasonable opinion that such breach could affect the transfer of EECS Certificates out of Conexus EECS Registration Database into the EECS Registration Database of another Member.

H ASSOCIATION OF ISSUING BODIES

H.1 Membership

This section demonstrates compliance with the following EECS Rules:

C2.2.6	C2.2.7		
--------	--------	--	--

- H.1.1 The AIB brings together the issuing bodies of European energy certificate schemes. The AIB promotes the use of a standardised system, based on a harmonised environment, structures and procedures in order to ensure the reliable operation of European energy certificate systems. With its independent and peer reviews, and its periodic audits, the AIB provides a robust framework for reliable and fraud-resistant GO systems. Among others, it can also act by suspending transfers through the Hub. Membership of AIB facilitates mutual recognition of GOs across Europe.
- H.1.2 In case Conexus ceases to be a Scheme Member of an EECS Scheme, it shall revise its EECS Registration Database so that every Production Device registered therein ceases to be registered for the purposes of EECS. Certificate issuing under EECS would stop, and EECS GOs would remain tradable only until Expiry.
- H.1.3 In case Conexus ceases to be the Authorised Issuing Body for EECS Certificates, it shall revise its EECS Registration Database so that each Production Device in the Domain ceases to be registered for the purposes of EECS Certificates, it shall stop issuing EECS GOs and after a transitional period the registry shall be taken offline.
- H.1.4 Conexus shall ensure that the Domain Protocol secures that the Product Rules for the relevant EECS Product and that it complies with the EECS Rules established for the EECS Scheme in relation to the relevant Output.

H.2 Complaints to the AIB

This section must demonstrate compliance with the following EECS Rules:

None directly	(J1.1.2)		
---------------	----------	--	--

- H.2.1 An Account Holder is allowed to notify the Secretary General of AIB in writing in case:
 - a) an Authorised Issuing Body in relation to an EECS Certificate is in breach of any of the provisions of Product Rules in relation to EECS Certificate; or

- b) any Product Rules do not comply with the relevant provisions of the EECS Rules, and evidence is provided substantiating such allegation, and that the Authorised Issuing Body has been given adequate opportunity to respond to such allegation.

The General Secretary of AIB shall invite the relevant Authorised Issuing Body to respond to the allegation.

DRAFT

I CHANGE CONTROL

I.1 Complaints to Conexus

This section must demonstrate compliance with the following EECS Rules:

None directly			
---------------	--	--	--

- I.1.1 Conexus shall endeavour to respond with remarks indicating a possible resolution to a complaint received via e-mail as soon as possible, but no later than within a period of 30 (thirty) days. Treatment of the complaint and disputes shall be done in accordance with the Latvian national legislation.

I.2 Disputes

This section must demonstrate compliance with the following EECS Rules:

None directly			
---------------	--	--	--

- I.2.1 All disputes and disagreements between the Parties of the Contract shall be resolved by means of mutual negotiations. In the event of a dispute the Party referring to the existence of the dispute shall submit a written notice to the other Party, containing a description of the dispute, the offered solution to the dispute and a person or persons authorised to solve the issue related to the dispute on behalf of the Party.
- I.2.2 If the dispute cannot be resolved within a period of 30 (thirty) days (unless the Parties have agreed upon a different deadline), it shall be finally settled pursuant to the procedure laid down in the applicable laws and regulations of the Republic of Latvia.

I.3 Change Requests

This section demonstrates compliance with the following EECS Rules:

E4.2.3	E6.2.1e	L5.1.1	
--------	---------	--------	--

- I.3.1 An EECS Market Participant may propose a modification to this Domain Protocol.
- I.3.2 Proposal for the modification of this Domain Protocol shall include a detailed description, including an exact specification of any proposed modification of this Domain Protocol and be sent in writing to Conexus.
- I.3.3 On receipt of such a request for the modification of this Domain Protocol, Conexus shall:

- I.3.3.1 Respond to the request within 30 (thirty) calendar days, describing the procedures to be followed, and estimating when a reply can be expected;
 - I.3.3.2 Consult with the other EECS Market Participants within Latvia and where relevant with AIB or other AIB Members;
 - I.3.3.3 Decide whether the request and its consequences are in Conexus opinion reasonable;
 - I.3.3.4 Inform the EECS Market Participants within Latvia about the outcome of the decision provided, that the request leads to modifications to this Domain Protocol or if it is otherwise considered important to disseminate.
- I.3.4 Conexus may make such modifications to this Domain Protocol as are in Conexus opinion necessary for the effective, efficient and transparent operation of the market.
- I.3.5 Any modifications to this Domain Protocol are subject to approval by the AIB (Assessment Panel in accordance with Section L5.2.1 of EECS Rules and the prior consent of the Scheme Group in accordance with the provisions of Section L5 of EECS Rules) that such changes do not conflict with the Principles and Rules of Operation of the Association of Issuing Bodies (AIB) for the European Energy Certificate System (EECS).
- I.3.6 Implementation of modifications will be notified by e-mail to the EECS Market Participants and will take effect on publication of the documentation on the website www.aib-net.org and Conexus www.conexus.lv.

ANNEX 1 CONTACTS LIST

AUTHORISED ISSUING BODY/REGISTRY OPERATOR

COMPANY NAME	AS "Conexus Baltic Grid"
CONTACT PERSON	Name Surname
DEPARTMENT	Department
ADDRESS	Stigu iela 14, Riga, LV
PHONE NUMBER	+371 67087900
E-MAIL ADDRESS	go@conexus.lv
WEBSITE	www.conexus.lv

COMPETENT AUTHORITY (IF DIFFERENT FROM THE AUTHORISED ISSUING BODY)

COMPANY NAME	AS "Conexus Baltic Grid"
CONTACT PERSON	Name Surname
DEPARTMENT	Department
ADDRESS	Stigu iela 14, Riga, LV
PHONE NUMBER	+371 67087900
E-MAIL ADDRESS	go@conexus.lv
WEBSITE	www.conexus.lv

REGISTRY SUPPORT

COMPANY NAME	AS "Conexus Baltic Grid"
CONTACT PERSON	Name Surname
DEPARTMENT	Department
ADDRESS	Stigu iela 14, Riga, LV
PHONE NUMBER	+371 67087900
E-MAIL ADDRESS	go@conexus.lv
WEBSITE	www.conexus.lv

PRODUCTION AUDITORS

COMPANY NAME	
CONTACT PERSON	
DEPARTMENT	
ADDRESS	
PHONE NUMBER	
E-MAIL ADDRESS	
WEBSITE	

A Production Auditor can be an auditor that has valid accreditation issued from the Latvian National Accreditation Bureau (LATAK) in the field of biogas/biomethane. A list of possible Production Auditors is available on the LATAK website www.latak.gov.lv/

MEASUREMENT BODIES

COMPANY NAME	AS "Conexus Baltic Grid"
CONTACT PERSON	Name Surname
DEPARTMENT	Department
ADDRESS	Stigu iela 14, Riga, LV
PHONE NUMBER	+371 67087900
E-MAIL ADDRESS	go@conexus.lv
WEBSITE	www.conexus.lv

DRAFT

ANNEX 2 ACCOUNT APPLICATION/AMENDMENT FORM

(will be updated)

DRAFT

ANNEX 3 DEVICE REGISTRATION FORM (WILL BE UPDATED)

New Registration / Declaration of Changes*		Date	
<u>Registrant Details</u>			
Is the Registrant also the owner of the Device?			Yes/No*
Registrant Name		Contact person	
Street		e-mail	
City		Telephone	
Postal code		Fax	
Country			
<u>Production Device Details</u>			
Device Name		Latitude	
Street		Longitude	
City		DSO/TSO's metering ID	
Postal code		Installed capacity (kW)	
Country	<i>[domain]</i>	Date of commissioning	
Measurement Body		Grid connected	Yes/No*
Energy Carrier of Output		Converting Energy Carriers based on GOs	Yes/No*
Production Auxiliaries present (if yes give details)		Yes/No*	
If the Production Device is not connected directly to the grid, specify the circumstances, and additional relevant meter registration numbers:			
Energy Sources (see tables below)			
Energy Input			Technology
Level 1	Level 2	Level3	Level 1 Level 2 Level3
Support Schemes			
Yes/No*	<i>[insert support scheme name here]</i>	Yes/No*	<i>[insert support scheme name here]</i>
Yes/No*	<i>[insert support scheme name here]</i>	Yes/No*	<i>[insert support scheme name here]</i>
Yes/No*	<i>[insert support scheme name here]</i>	Yes/No*	<i>[insert support scheme name here]</i>
Independent Certification Schemes for which the device is eligible			

Signed

Registrant Authorised Signature

Signature of Production Registrar

DRAFT

ANNEX 4 PRODUCTION/CONSUMPTION DECLARATION

(will be updated)

DRAFT

ANNEX 5 EECS CANCELLATION STATEMENT

(will be updated)Template

This Cancellation Statement acts as a receipt for the <EECS Scheme> Certificates listed below and for the purpose shown.

Unique identification number of this Cancellation statement: xxxxxxxxxxxxxxxx .

With this Cancellation Statement, released on the <yyyy-mm-dd>, the indicated certificates are no longer tradable. Onward sale of this Cancellation Statement is prohibited.

The environmental qualities and other attributes of the associated energy have been consumed and that this Cancellation Statement and these Certificates may not be transferred to any party other than the energy supplier or end-consumer identified in this Cancellation Statement.

The beneficiary has declared that this cancellation corresponds with consumption of energy in the same Energy Carrier as the Energy Carrier identified on the Certificates.

the Certificates.

Account Holder Information	
Account Number	<04X00000B1>
Name	<Engie>
Address	<Regentlaan 8,1000 Brussels>

Beneficiary information	
Type of beneficiary	< Energy Supplier> or <End-Consumer> or <Production Device operator (in case of Energy Carrier Conversion)>
Identity of the beneficiary	<Energy Supplier name, e.g., Electrabel> or <End-Consumer name / End-Consumer Group > or <Identification of the operator of the Production Device in which the energy is being converted into another Energy Carrier, in case of Conversion Issuance/EECS Certificate Conversion>
Country (of Consumption)	< e.g., Belgium>

Location of the beneficiary	< e.g. Brussels> (optional)
Brand name	<e.g., ENEL Green Power, E.On GO Green, etc. ...> (if specified in the associated cancellation request)

Certificate Cancellation Information

Energy Carrier	<electricity> / ...
Total Cancelled Certificates	<60 000>
Cancellation Date	<2015-09-15>
Registry Cancelled from	<Country Code> <IB Code> <IB name>
Type of Cancelled Certificates	<Guarantee of origin> /<Support Certificate>/<Target Certificate: (Target scheme name)> /<Non-governmental Certificate: (NGC scheme name)>
Cancellation category	<Disclosure>/<...>
Cancellation purpose	<support of eco-label on behalf of customer in x Domain in year Z>

Consumption information

Consumption period from/to	yyyy-mm-dd - yyyy-mm-dd
-----------------------------------	-------------------------

Additional Remarks by the Issuing Body

<Free text>

Identity of each Certificate:

From Certificate ID	To Certificate ID	Volume	Domain of Issue	Fuel, Technology	Issue Date	Production Period from/to	Production Device ID
64206164132250081000XXXXXXXXXX	64206164132250081000XXXXXXXXXX	10 000	<Norway>	<T020001 – Wind/Onshore>, <F01050100 – Renewable /Mechanical source>	yyyy-mm-dd	yyyy-mm-dd - yyyy-mm-dd	<70705230001000XXXX>
64206164132250081000XXXXXXXXXX	64206164132250081000XXXXXXXXXX	20 000	<Switzerland>
64206164132250081000XXXXXXXXXX	64206164132250081000XXXXXXXXXX	30 000	<France>